



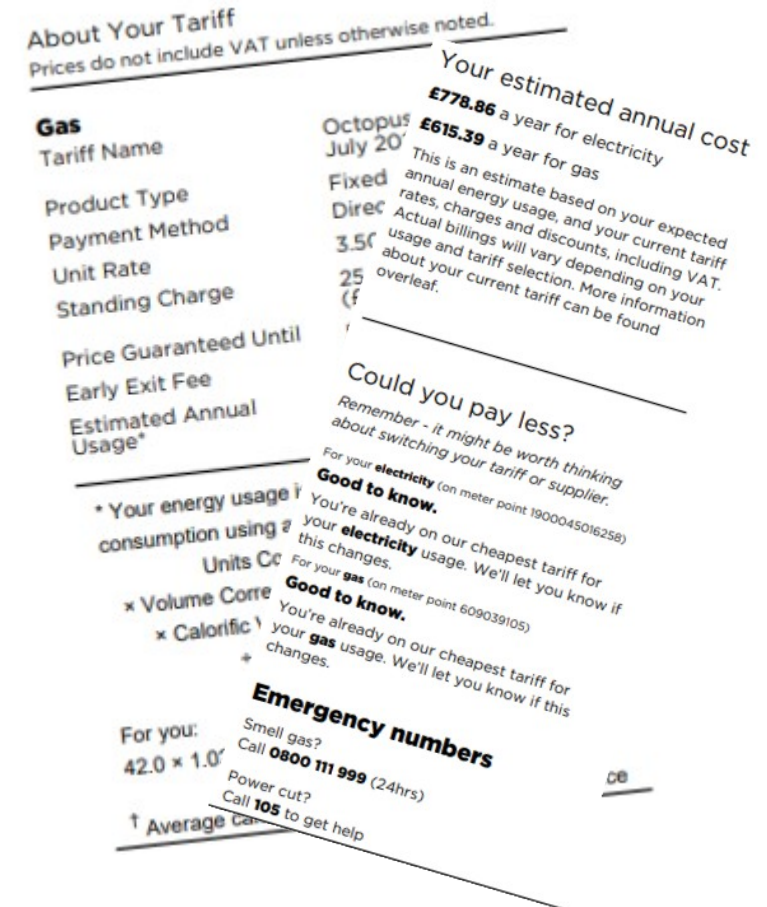
Stay Warm, Cut Costs

Session 3

What are these sessions about?

- Practical advice to:
- Alleviate fuel poverty
- Reduce Energy Consumption
- Help you stay Warm and Healthy

Covered over 3 sessions



Fuel Poverty Impact



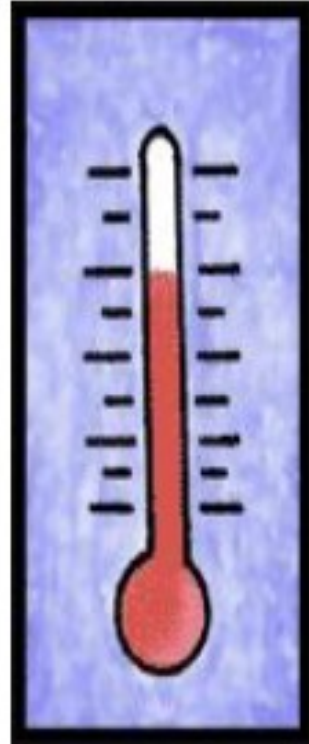
9%

2.5 m households are usually in fuel poverty each year

25%

6.75 m households will be in fuel poverty this winter

Health effects of low temperatures



Above 18°C (64°F) :
No adverse health effects

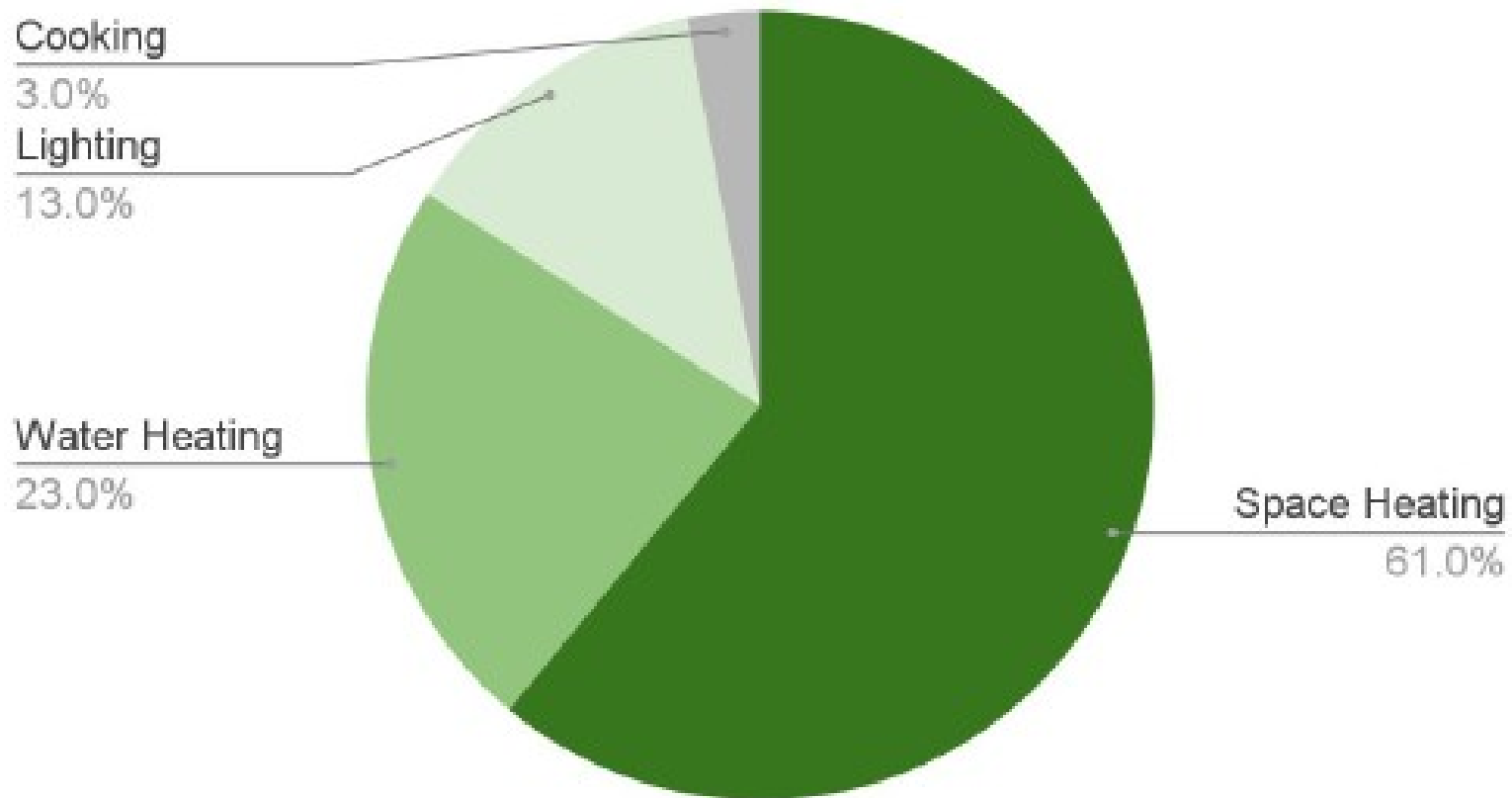
Below 16°C (61°F) :
Risk of respiratory infections

Below 12°C (54°F) :
Increased blood pressure and
blood thickens

Below 9°C (48°F) :
Deep body temperature falls

Britain experiences **40 000** excess winter deaths
per annum

Energy use in a typical home

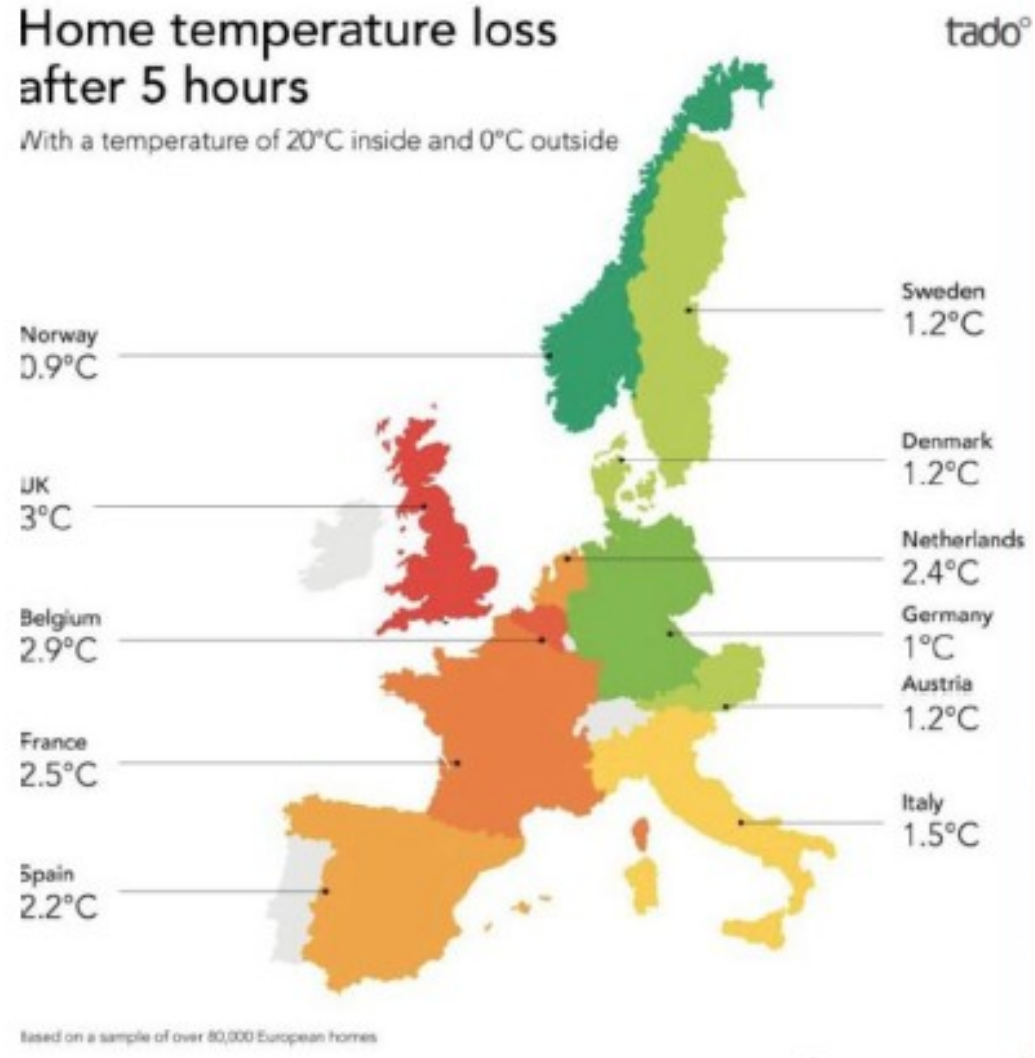


Behavioural Change



Heating	Electricity
Only heat rooms you are in and close doors	Wash clothes at 30°C
Turn down your thermostat 1°C	Don't overfill the kettle
Turn boiler flow temperature down to 60°C	Do not leave appliances on standby
Close curtains and blinds at night	Check seals on fridge/freezer
Block drafts using a door snake	Turn off lights that are not being used

Britain has the leakiest homes in Europe



Energy Performance Certificates



Energy efficiency rating for this property

This property's current energy rating is D. It has the potential to be C.

[See how to improve this property's energy performance.](#)

Score	Energy rating	Current	Potential
92+	A		
81-91	B		
69-80	C		80 C
55-68	D	63 D	
39-54	E		
21-38	F		
1-20	G		

The graph shows this property's current and potential energy efficiency.

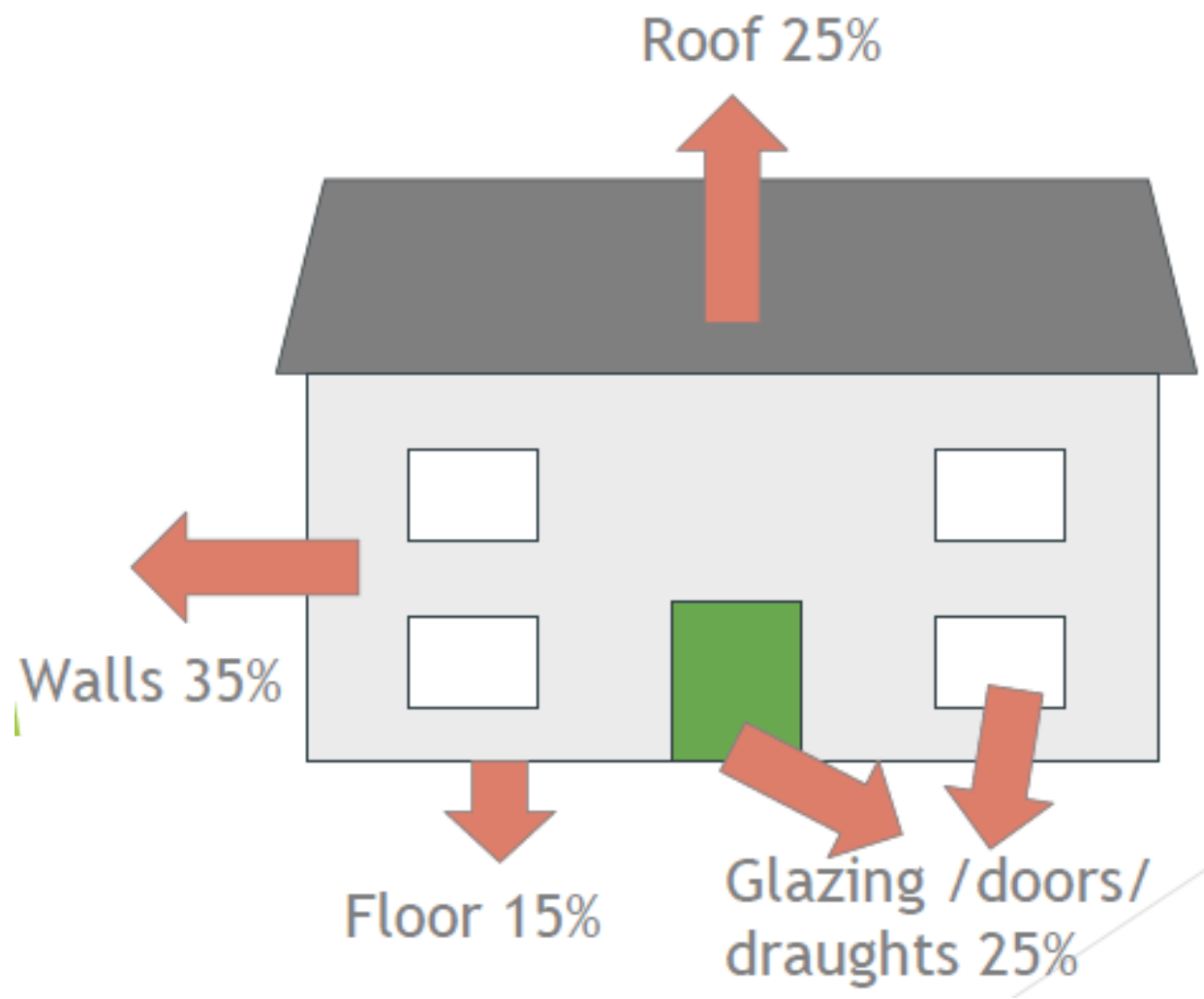
Properties are given a rating from A (most efficient) to G (least efficient).

Properties are also given a score. The higher the number the lower your fuel bills are likely to be.

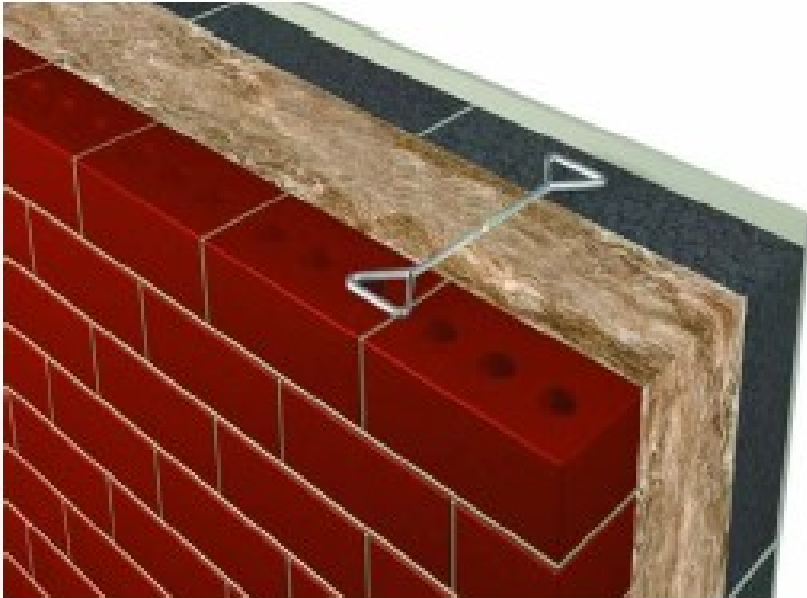
Government website
stores all Energy
Performance
Certificates

<https://www.gov.uk/find-energy-certificate>

Heat Escapes from these areas



Cavity Wall Insulation



Fibre boards



Bonded beads
Expanding foam
Mineral Fibre

Internal Wall Insulation



External Wall Insulation



External Insulation & Render
Both must be vapour open

Eaves will require extending

Underfloor insulation



Switching Energy Supplier

(not an option at present time)



Step 1

Phone the supplier
you wish to change to and agree a new contract

Step 2

Confirm the deal
you would like when speaking to your supplier

Step 3

Check Contract
Has the correct tariff and correct start date

Step 4

Settle your bill
With your old provider

Step 5

Take a meter reading
On the day you change provider so you can check your bills



Grants to pay utility bills

Fuel debt grants are awarded to:

- Clear domestic gas and electricity debts
- Clear other priority debts including water and sewerage
- Purchase essential household items

See www.charisgrants.com



Home Improvement Grants

- Green Homes (Local Authority Delivery) Scheme
- Warmer Homes
- Energy Companies Obligation

Green Home Grants

- ▶ Up to £10k of funding for energy efficiency measures.
- ▶ Have a household income of £30,000 or less, or £20,000 or less after housing costs
- ▶ Live in a property with an EPC rating of D, E, F or G
- ▶ Either own your own home or have your landlords permission.
- ▶ Councils have around £500k of funding p.a.



Warmer Homes

To apply you need to:

- live in Greater London
- own or rent your own home, landlords can apply as long as the tenant is eligible
- be receipt of a means-tested benefit OR have a low household income (less than £20,000 a year after rent/mortgage and council tax deductions)
- have a property EPC rating of D, E, F and G*

*EPC ratings can be determined at survey stage



Warmer Homes Scheme

Grants available for:

- heat pumps
- draughtproofing
- Solar energy installations
- insulation for walls, lofts and floors
- heating system improvements or repairs

Warmer Homes Scheme

Grants available for:

- heat pumps
- draughtproofing
- Solar energy installations
- insulation for walls, lofts and floors
- heating system improvements or repairs



RBK Warmer Homes Better Health Programme



Applicants must be:

- over 65
- in poor health
- on low income

Advice offered may include:

- Free items like
 - LED light bulbs
 - radiator reflective panels
 - Draught excluders
- Assessments for grants
- Assessments for utility discounts

Energy Companies Obligation



Home owners and tenants

Receiving certain benefits – likely to be eligible for FREE wall and loft insulation, heating systems and draught proofing

Not receiving benefits – substantial discounts on cavity wall and loft insulation

www.gov.uk/improve-energy-efficiency

[Find ways to save energy in your home - GOV.UK \(www.gov.uk\)](http://www.gov.uk)

Volunteering Opportunities



- Warmer Homes Scheme
- Climate Education Charity



A CHARITY OFFERING FREE
EDUCATION TO CHILDREN ABOUT
CLIMATE CHANGE AND CARBON
LITERACY

Can **you** help children
in London become
climate leaders?

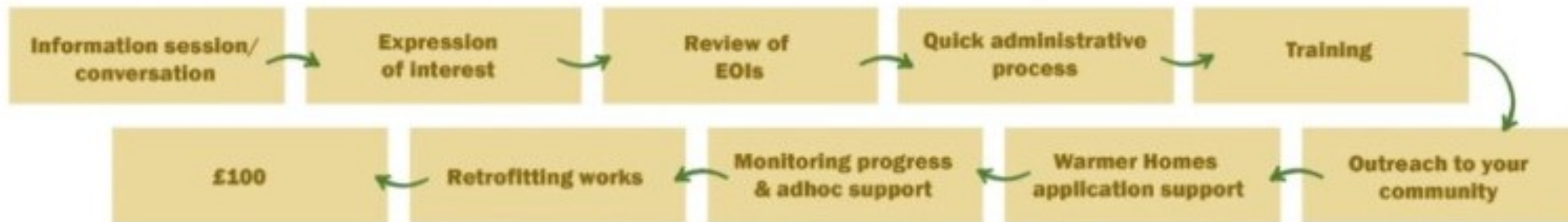
Workshop Facilitator
Volunteer Opportunity!



Warmer Homes Advocates



Warmer Homes Advocates Process





Questions and comments